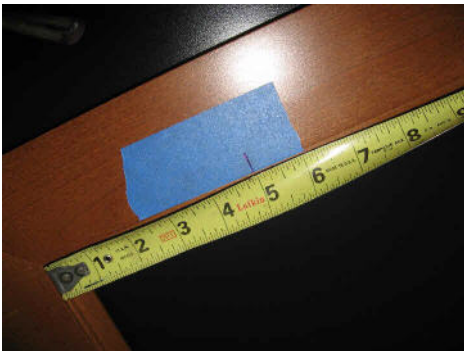




How To Install Glass in Cabinet Frames

Using Metal Retaining Clips

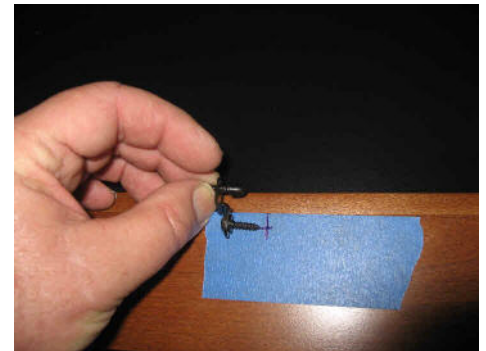
The easiest way to install glass into cabinet frames would be with metal clips. You can purchase cabinet glass retaining clips from most hardware stores or add them to your order of Etched Glass Inserts or Specialty Glass. Follow the 12 easy steps below to get a professional look.



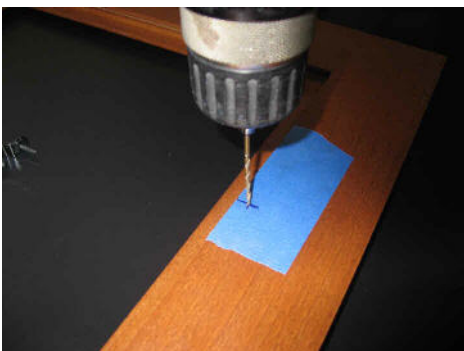
Step 1 - From the back of the frame measure from the bottom up on the left & right sides 5 inches and make a mark. Repeat from the top down. You should have 4 marks.



Step 2 - From the back of the frame measure in from the side lip of the wood 1/4" and make another mark. You should now have a + sign. Repeat 3 more times



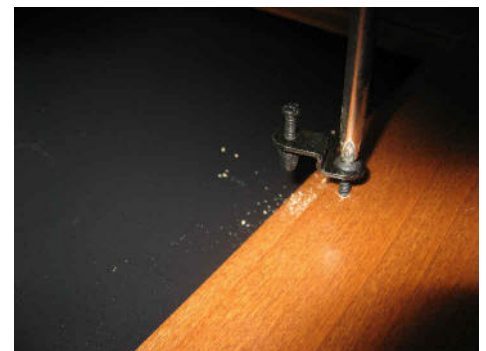
Step 3 - You now have a center mark where the tip of the screw will go into after drilling a pilot hole in the next step.



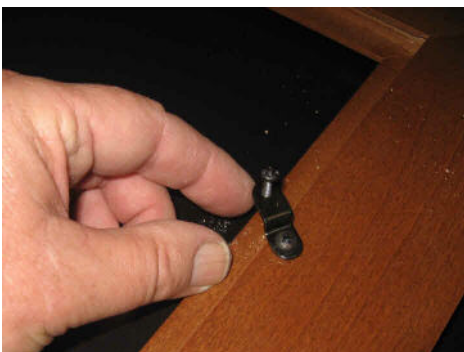
Step 4 - Drill a pilot hole only 1/4" deep being very careful not to drill through to the front of the cabinet frame.



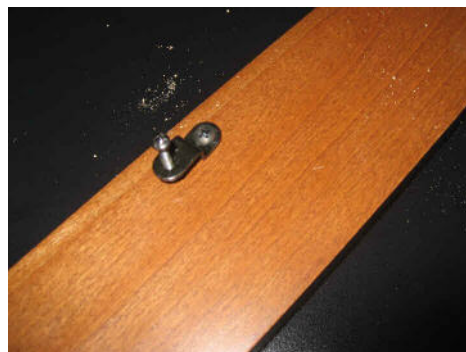
Step 5 - Remove tape and align screw with pilot hole.



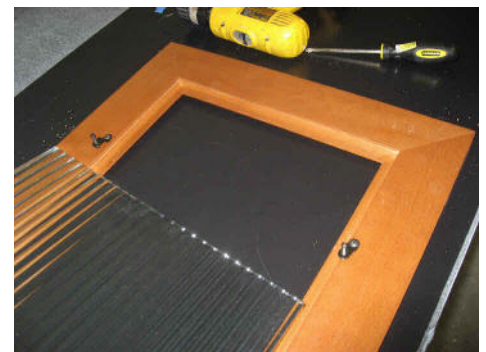
Step 6 - Screw down with hand screwdriver only until you can barely swing the metal clip.



Step 7 - After installing all metal clips swing the adjustment screws to the side to give you room for the glass to be inserted.



Step 8 - All metal clips should be swung over like this giving full clearance for the glass.



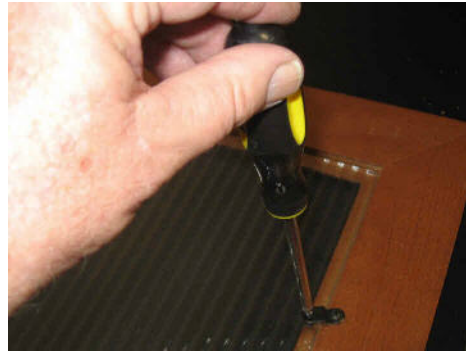
Step 9 - Carefully insert glass avoiding contact between glass and metal clips.



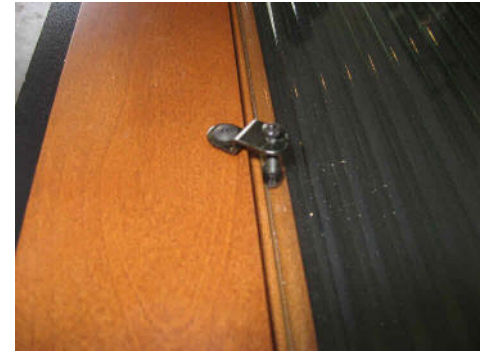
How To Install Glass in Cabinet Frames



Step 10 - After glass is inserted swing metal clips over the glass.



Step 11 - Screw down clips with a hand screwdriver **ONLY**. Do not tighten too much or you can crack the glass. You need just a snug fit so the glass doesn't move.



Step 12 - This is what all of the metal clips should look like after installation.

Glass Retainer Clip firmly holds glass panels in wood frame doors. The thumbscrew adjusts to various door and glass thickness and allows quick removal for cleaning. Simply surface mount on the inside of the door. The black clip includes a mounting screw and a protective plastic tip.

Important Note

After you insert the glass do **NOT** screw the Metal Retaining Clips too tight because it will put undue pressure on the Decorative Glass and can cause pressure points that may crack the glass.

You only need to tighten the Metal Retaining Clips enough so that the glass is secure and does not rattle when you shut the cabinet door.



Note:

For the average size cabinet frame 6 metal clips are sufficient. One top and bottom and two on each side. If you have a small cabinet frame we recommend 4 clips per door, one on top and bottom and one on each side. If you have a very large cabinet you might consider using 8 metal clips per door, two on top and bottom and two on each side.

If you request the an Order Form Package we will adjust the number of clips we feel would be sufficient on the Order Form Package sent to you.